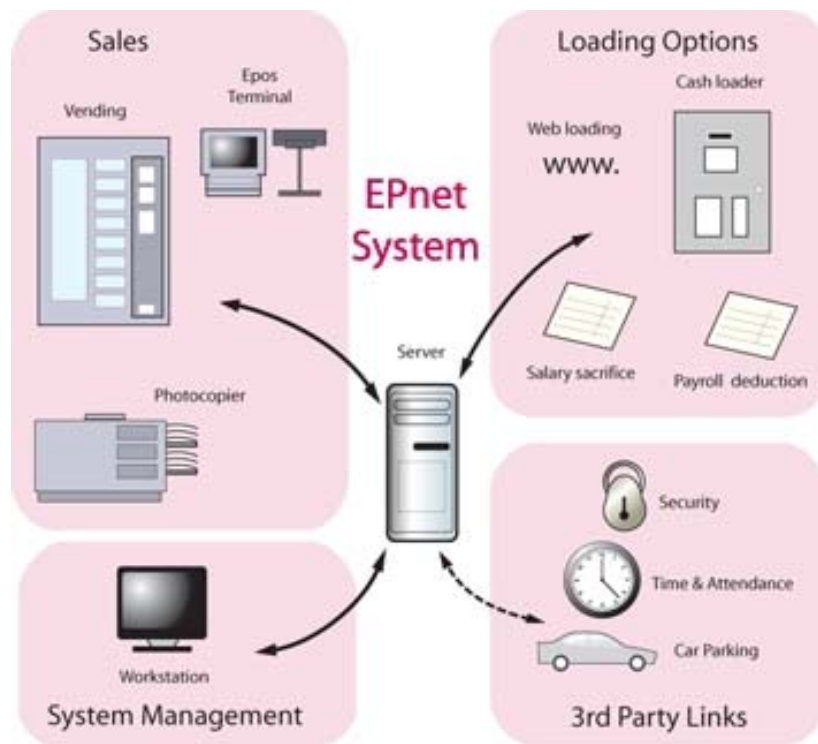


## EPnet Cashless in the Corporate environment



EPnet cashless works in a corporate environment providing a complete cashless solution. Generally it is linked to the security access system allowing a single card to be used for access and catering/vending. It can also link to a variety of other equipment.

EPnet Cashless provides many benefits including:

- 1) Control of free issue at tills/vending machines and other subsidies/discounts
- 2) Faster transactions
- 3) No need for change at vending machines
- 4) Reduced costs
- 5) Reduction or removal of cash handling
- 6) Improved vending reliability
- 7) Sales analysis and stock control
- 8) Accountability for the caterer and user
- 9) Improved security and potential "shrinkage"
- 10) Reduced staffing

The EPnet Cashless system is made up of a number of constituent parts depending upon the configuration of the site. Staff restaurant, vending etc. These parts are:

- 1) Back office PC and software/Interfaces
- 2) Cards
- 3) EPoS terminals
- 4) Vending terminals
- 5) Loading options
- 6) Stock Control

Looking at each of these separately:

## 1) Back Office PC and software

The EPnet Cashless system is operated through its software. The whole system is programmed, and all reports are supplied through the software. Complete control of the system is made through the workstation; right down to changing the price in the vending machines, changing staff allowances, checking account history and printing out all reports.

The system requires a server to run on and a workstation to access the data e.g. set up cards, change prices, print reports. The system can be configured for a local or Cloud-Based server. The workstation is usually the Catering Managers existing PC.

Any interfaces are also operated from here. The usual interface in a corporate environment is the security access interface. This simply requires the security system to download a CSV file for EPnet to read to populate its card and account database. This is specifically set-up to ensure there is no access to the security system from the EPnet system.

## 2) Cards

The card used to operate the system is usually the standard, existing access door card. EPnet has interfaces to most major manufacturers including HID, PAC, DESfire, Mifare, Paxton etc. By using the standard card and linking to the database EPnet Cashless provides a solution that is fully integrated into the existing infrastructure and requires no additional costs for new cards or modifying existing cards.



If a security card is not available we will discuss with the client the card requirements and supply the appropriate card technology through Quintus.

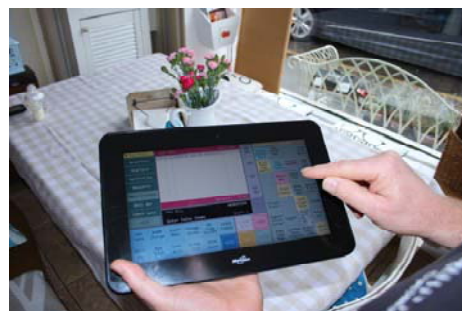
Biometric options are also available.

## 3) EPoS terminals

The EPnet Cashless EPoS terminal is a very reliable, quiet touchscreen terminal with small footprint and inbuilt PSU and customer display.

It can be used in Hospitality and Retail mode for staff restaurants, self-service restaurants and shops and is supplied with a variety of peripherals including:

- a) Customer display
- b) Receipt printer (thermal or Dot Matrix)
- c) Cash drawer (where required)
- d) Linked weighing scales
- e) Bar code scanner



A mobile tablet MPoS version of the till is also available. (as illustrated)



## 4) Vending terminals

The EPnet Cashless vending terminal is fully integrated into the EPnet Cashless system. All programming and report printing is carried out from the Managers PC including comprehensive sales analysis and price changing.

Vending terminals are available with Executive and MDB interfaces.



## 5) Loading

- a) Cash Loading
- b) Payroll
- c) Web Loading

All cashless systems need to 'load' money. Some load the money on the cards; however, EPnet is an account-based system. No money is held on the card ensuring that a lost card is not lost money. With EPnet Cashless the money is loaded to an account securely held on the server. EPnet Cashless gives a variety of options for Loading. All the options are interchangeable and can be used on the same system as different user options.



- a) Cash Loading

Cash Loading uses a Loader machine on-site. The card is presented to the Loader and cash inserted. The cash is then added to the users account. The account is run in debit mode with the value being added first and the account deducting money for each transaction.

- b) Payroll

Payroll accounts run in credit mode. The account starts the month with a zero balance. As each transaction takes place the amount is added to the overall balance. At the end of the month the balances are sent to Payroll and the accounts zeroed, ready for the next month.

- c) Web Loading

EPnet Cashless can be linked to the banking system via the Internet. This enables the user to add money to their EPnet Cashless account from any web-enabled device at work, home or elsewhere. This option can also be used to top-up third party accounts e.g. parents topping-up their children's school accounts.

## 6) Stock Control

A fully integrated Stock Control module is available with EPnet Cashless. This extends the comprehensive reporting available from the sales to the purchasing side of the operation. The stock control module includes Receipts from Suppliers, Stores, Stock Movements, Stock Take procedures and is completely integrated into the sales processing by the tills and vending machines.

### Other features

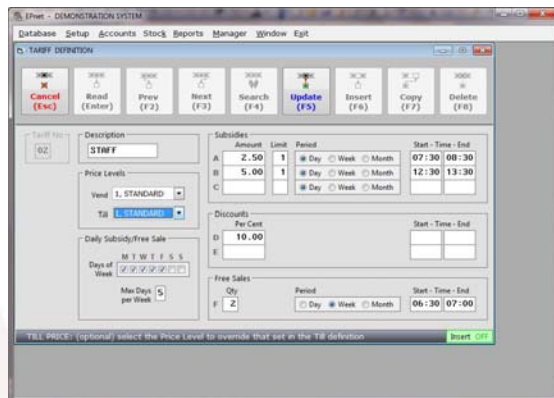
- a) Tariffs
- b) Reward Schemes
- c) Meal Packages

#### a) Tariffs

Tariffs enable users to be provided with a number of benefits. These benefits include:

- Free sales
- Discounts
- Subsidies

All tariff benefits are defined by user, stock items, sales point and by time & date ensuring the correct benefit can be offered to the correct group of staff for the correct items. Hence,



a free issue or discount may be only available to a particular group (staff, not contractors), a particular Stock Department (meals, not confectionary), at a particular time and at a particular sales point (vending machines, not tills). The Tariff package is extremely comprehensive and adaptable.

All Tariff sales are accurately reported ensuring complete control and analysis of benefit issuing. Tariffs enable benefits to be limited, controlled & be accounted for.

#### b) Reward Schemes

The EPnet Cashless Reward Scheme enables the system to provide loyalty rewards to users, through a system of awarding points for purchases that accumulate and can be used for discount on future purchases.

#### c) Meal Packages

The EPnet Cashless Meal Packages allows the user benefits in a different format. When a number of items are purchased they can have a fixed price, for example, buy any Starter, Main Course and Dessert for a fixed price. Also a cheapest item free Package can be set up to enable the user to buy, for example 3 items and get the cheapest free.

